

BS4310



Order corresponding
Bullet Sizer & Punch to
use with this kit

**BREECH LOCK
BULLET SIZER
KIT**

Bullet Sizer & Punch more sizes on leeprecision.com

| Product | Dia. | Product | Dia. | Product | Dia. |
|---------|------|---------|------|---------|------|
| 91505 | .224 | 91514 | .314 | 91523 | .427 |
| 91506 | .225 | 91515 | .323 | 91524 | .429 |
| 91507 | .243 | 91516 | .329 | 91525 | .430 |
| 91508 | .278 | 91517 | .339 | 91526 | .451 |
| 91509 | .284 | 91518 | .356 | 91527 | .452 |
| 91510 | .285 | 91519 | .357 | 91528 | .454 |
| 91511 | .308 | 91520 | .358 | 91529 | .457 |
| 91512 | .309 | 91521 | .401 | 91530 | .501 |
| 91513 | .311 | 91522 | .410 | 91531 | .510 |

Bottle Adapter
#BS4259



Breech Lock Bullet
Sizer insert
#BS4260



WARNING: Handling lead objects may expose you and others in the area to lead, which is known to the State of California to cause reproductive harm and cancer. For more information, go to www.P65Warnings.ca.gov.

LEE
LEE PRECISION, INC.
4275 COUNTY ROAD U - HARTFORD WI 53027
www.leeprecision.com

**BREECH LOCK
BULLET SIZER KIT**



Lubricate Bullets



Place bullets in plastic container and dribble Lee Liquid Alox on to the bullets.



Liquid Alox
Product
90177



Gently shake the bullets in orbital motion to coat bullets. If they do not coat completely, add a little more lube.



Spread bullets on wax paper, let dry overnight

**Fastest and easiest way to
size cast bullets:**

APP PRESS
90933



**Installing into
single stage press?**



SCAN ME

④ Select appropriate bullet sizer and punch.



SCAN ME

5 Roll mark in first



Breech Lock insert

Insert roll marked end of bullet sizer in first into the Breech Lock insert.

6

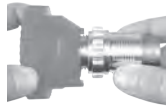


Install aluminum bottle adapter.



Product# 91151

7



Install bottle adapter on to bullet sizer insert.

8



The clear bottle or an empty powder container can be used to catch sized bullets.

9



Install breech lock bullet sizer assembly in APP base casting.

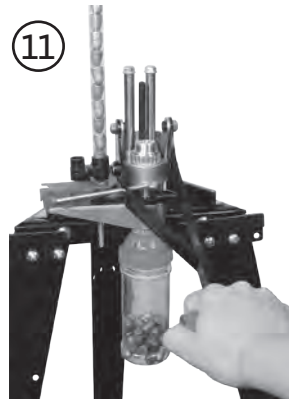
Tighten $\frac{1}{3}$ of a turn counter clockwise.

10



Install shell holder adapter and appropriate sized punch in upper APP casting.

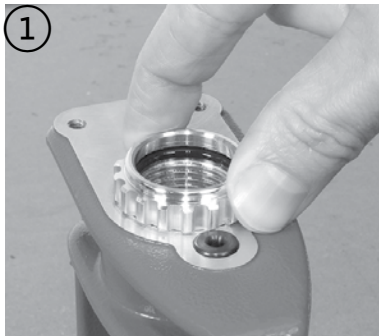
11



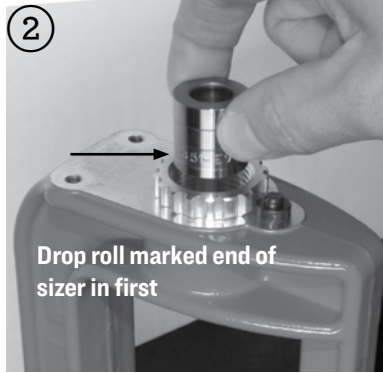
Load the feed tube with bullets (nose first)

Sized bullets will collect in bottle adapter. Or you can use your empty powder bottle or any bottle with a 53mm or 43mm thread.

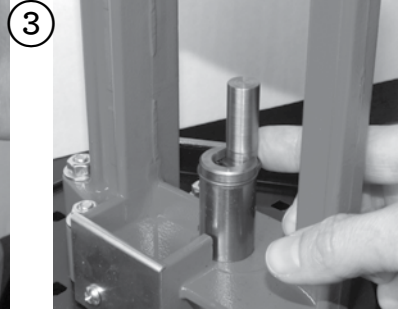
Breech Lock Bullet Sizing Kit instructions for single stage press



1 Install the Breech Lock Bullet Sizer insert into press.



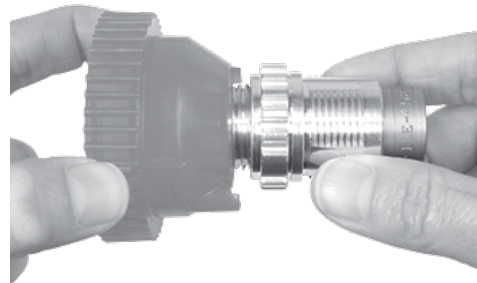
2 Slide the sizer into the Breech Lock Bullet Sizer insert.



3 Install the bullet punch into the ram. This fits all rams that use standard press shell holders.



Bottle Adapter



OPTIONAL ACCESSORY

BULLET SIZER BOTTLE ADAPTER Product # 91151

Catch sized bullets in a convenient hopper, also fits most empty powder containers for larger capacity.

Screw bottle adapter inside Bullet Sizer die.



5 Place bullet on punch and push through sizer.

***Fastest and easiest way to
size cast bullets:***

**APP PRESS
90933**

